



Helpful Contacts for MI Residents

Check out the contacts below to support you.

APPLY FOR/RENEW BENEFITS



PHONE APPLICATION LINE

Contact: To apply for Medicaid by answering questions over the phone

PHONE: 855-276-4627

PHONE TTY: 866-501-5656

AVAILABLE: Mon-Fri, 8 a.m. to 7 p.m.



PHONE RENEWAL LINE

Contact: To submit a Medicaid renewal by answering questions over the phone

PHONE: 833-599-6444

PHONE TTY: 866-501-5656

AVAILABLE: Mon-Fri, 8 a.m. to 7 p.m.



LOCAL MDHHS OFFICES

Contact: To answer questions about your case

PHONE: 844-464-3447

AVAILABLE: Mon-Fri, 9 a.m. to 3 p.m.

CHECK ON BENEFITS



BRIDGE CARD AND ELECTRONIC BRIDGE TRANSFER (EBT)

Contact: To answer questions regarding your Bridges/EBT card

PHONE: 888-678-8914, TTY: 711

AVAILABLE: Mon-Sun, 24 hrs a day

WEBSITE: ConnectEBT.com



BENEFICIARY HELP LINE

Contact: To answer general Medicaid coverage and program questions

PHONE: 800-642-3195

PHONE TTY: 866-501-5656

AVAILABLE: Mon-Fri, 8 a.m. to 7 p.m.



MICHIGAN ENROLLS

Contact: To support you in enrolling in a Medicaid Health Plan

PHONE: 800-975-7630 or 888-367-6557

PHONE TTY: 888-263-5897

AVAILABLE: Mon-Fri, 8 a.m. to 7 p.m.

UNEMPLOYMENT INSURANCE CONTACTS



UNEMPLOYMENT INSURANCE AGENCY (UIA)

Contact: If you have an unemployment claim

PHONE: 866-500-0017

PHONE TTY: 866-366-0004

AVAILABLE: Mon-Fri, 8 a.m. to 5 p.m.

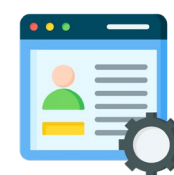


MARVIN

Contact: To certify for unemployment benefit payments

PHONE: 866-638-3933

AVAILABLE: Mon-Fri, 8 a.m. to 4:30 p.m.



MICHIGAN WEB ACCOUNT MANAGER (MiWAM)

Contact: To answer questions regarding your unemployment benefits

WEBSITE: From your [MiWAM home page](#), click "Chat with an agent."

AVAILABLE: Mon-Fri, 8 a.m. to 5 p.m.

TECHNICAL SUPPORT



MI BRIDGES SUPPORT HELP DESK

Contact: To answer technical questions or to report errors received while using MI Bridges

PHONE: 844-799-9876

PHONE TTY: 833-285-5910

AVAILABLE: Mon-Fri, 8 a.m. to 5 p.m.



MDHHS-Pub-1976

The Michigan Department of Health and Human Services (MDHHS) does not discriminate against any individual or group on the basis of race, national origin, color, sex, disability, religion, age, height, weight, familial status, partisan considerations, or genetic information. Sex-based discrimination includes, but is not limited to, discrimination based on sexual orientation, gender identity, gender expression, sex characteristics, and pregnancy.